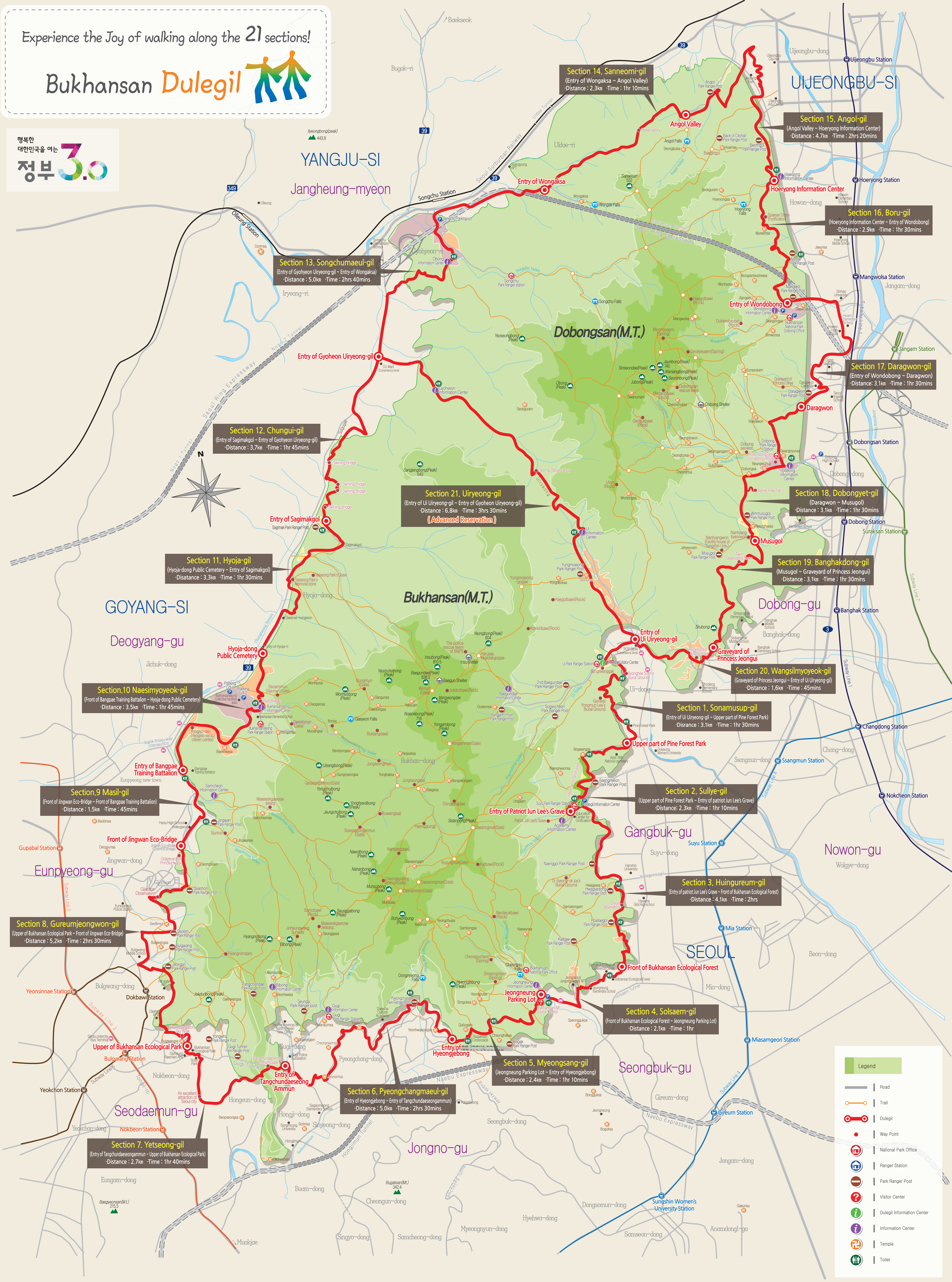


Experience the Joy of walking along the 21 sections!

Bukhansan Dulegil



- Section 1. Sonamup-gil**
(Entry of Uiryeong-gil - Upper part of Pine Forest Park)
Distance : 3.1km Time : 1hr 30mins
- Section 2. Sullye-gil**
(Upper part of Pine Forest Park - Entry of patriot Jun Lee's Grave)
Distance : 2.3km Time : 1hr 10mins
- Section 3. Huingureum-gil**
(Entry of patriot Jun Lee's Grave - Front of Bukhansan Ecological Forest)
Distance : 4.1km Time : 2hrs
- Section 4. Solsaem-gil**
(Front of Bukhansan Ecological Forest - Jeongneung Parking Lot)
Distance : 2.1km Time : 1hr
- Section 5. Myeongsang-gil**
(Jeongneung Parking Lot - Entry of Hyeongjeong-bong)
Distance : 2.4km Time : 1hr 10mins
- Section 6. Pyeongchangmaeul-gil**
(Entry of Hyeongjeong-bong - Entry of Tangchundaseongamun)
Distance : 5.0km Time : 2hrs 30mins
- Section 7. Yetseong-gil**
(Entry of Tangchundaseongamun - Upper of Bukhansan Ecological Park)
Distance : 2.7km Time : 1hr 40mins
- Section 8. Gureumjeongwon-gil**
(Upper of Bukhansan Ecological Park - Front of Jingwan Eco-Bridge)
Distance : 5.2km Time : 2hrs 30mins
- Section 9. Masil-gil**
(Front of Jingwan Eco-Bridge - Front of Bangpae Training Battalion)
Distance : 1.5km Time : 45mins
- Section 10. Naesimyoyeok-gil**
(Front of Bangpae Training Battalion - Hyoja-dong Public Cemetery)
Distance : 3.5km Time : 1hr 45mins
- Section 11. Hyoja-gil**
(Hyoja-dong Public Cemetery - Entry of Sagimakgol)
Distance : 3.3km Time : 1hr 30mins
- Section 12. Chungui-gil**
(Entry of Sagimakgol - Entry of Gyoheon Uiryeong-gil)
Distance : 3.7km Time : 1hr 45mins
- Section 13. Songchumaeul-gil**
(Entry of Gyoheon Uiryeong-gil - Entry of Wongaksa)
Distance : 5.0km Time : 2hrs 40mins
- Section 14. Sanneomi-gil**
(Entry of Wongaksa - Angol Valley)
Distance : 2.3km Time : 1hr 10mins
- Section 15. Angol-gil**
(Angol Valley - Hoeryong Information Center)
Distance : 4.7km Time : 2hrs 20mins
- Section 16. Boru-gil**
(Hoeryong Information Center - Entry of Wondobong)
Distance : 2.9km Time : 1hr 30mins
- Section 17. Daragwon-gil**
(Entry of Wondobong - Daragwon)
Distance : 3.1km Time : 1hr 30mins
- Section 18. Dobongyet-gil**
(Daragwon - Musugol)
Distance : 3.1km Time : 1hr 30mins
- Section 19. Banghaktong-gil**
(Musugol - Graveyard of Princess Jeongui)
Distance : 3.1km Time : 1hr 30mins
- Section 20. Wangsilmyoyeok-gil**
(Graveyard of Princess Jeongui - Entry of Uiryeong-gil)
Distance : 1.6km Time : 45mins
- Section 21. Uiryeong-gil**
(Entry of Uiryeong-gil - Entry of Gyoheon Uiryeong-gil)
Distance : 6.8km Time : 3hrs 30mins
(Advanced Reservation)

Legend

- Road
- Trail
- Dulegil
- Way Point
- National Park Office
- Ranger Station
- Park Ranger Post
- Visitor Center
- Dulegil Information Center
- Information Center
- Temple
- Toilet